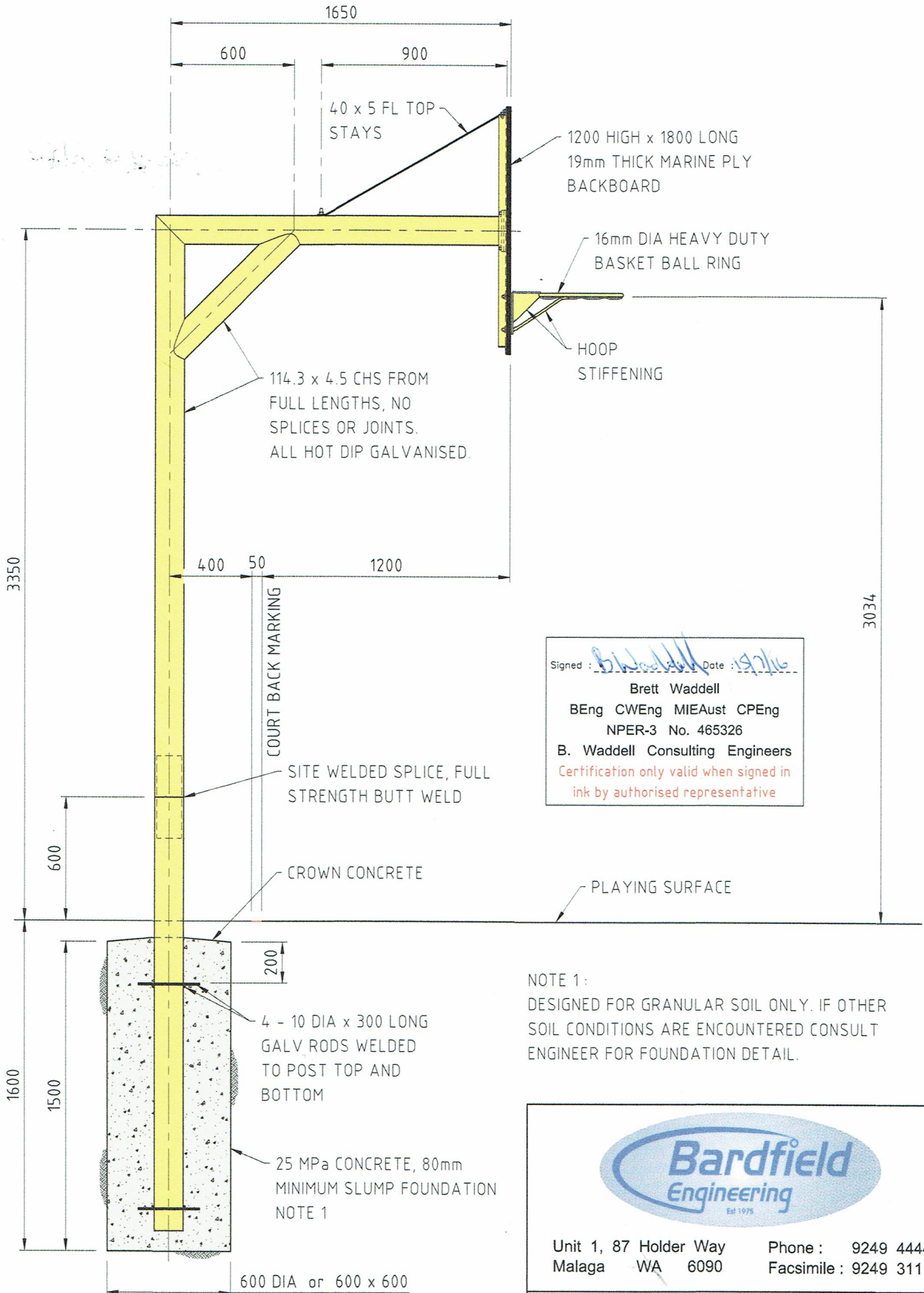


Regional A1 Cat 2 Importance Level 3 1650mm Extended Basket Ball Unit



Signed : *B. Waddell* Date : *19/7/16*
 Brett Waddell
 BEng CWEng MIEAust CPEng
 NPER-3 No. 465326
 B. Waddell Consulting Engineers
 Certification only valid when signed in
 ink by authorised representative

NOTE 1 :
 DESIGNED FOR GRANULAR SOIL ONLY. IF OTHER
 SOIL CONDITIONS ARE ENCOUNTERED CONSULT
 ENGINEER FOR FOUNDATION DETAIL.



Bardfield Engineering
 Est 1975

Unit 1, 87 Holder Way Phone : 9249 4444
 Malaga WA 6090 Facsimile : 9249 3111

2624 - CR - E1650 - BBU - 01